

RDY
2GO



Plot 249

Four bedroom home at Verve, Castleford

SERIES

Stone

Inspired by the raw warmth of unpolished surface of stone, creating a feeling of serenity and safety. The rich textures and tones envelope you in a hug, welcoming you home.



1,469

Square foot home.

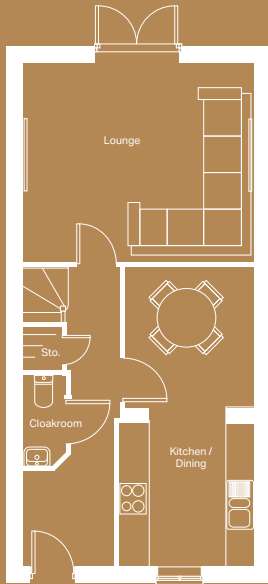
4 bedroom

Home over 3 floors.

£9,519

Worth of interior designed upgrades.
Including a turfed rear garden.



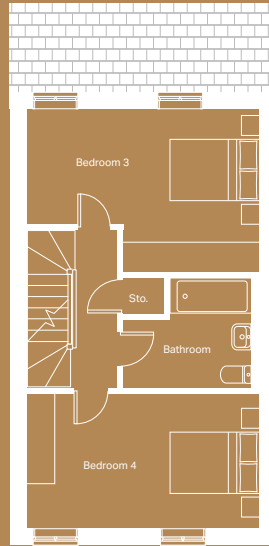


Ground floor

Kitchen / Dining ^(min)
2715mm x 6277mm

Lounge
4865mm x 4190mm

Cloakroom ^(max)
923mm x 1897mm

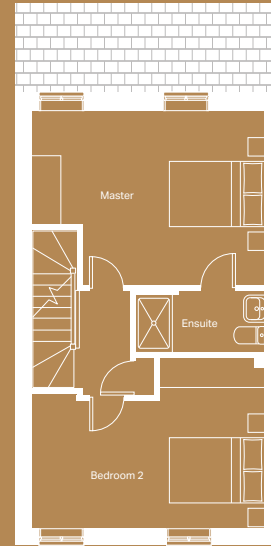


First floor

Bedroom 3 ^(max)
4860mm x 3419mm

Bedroom 4
4860mm x 2847mm

Bathroom ^(max)
2677mm x 2333mm



Second floor

Master Bedroom ^(max)
4860mm x 3672mm

Ensuite ^(max)
2702mm x 1303mm

Bedroom 2 ^(max)
4860mm x 3599mm

STONE

Specification

FLOORING	Laminate: Honey Oak Carpet: Lincoln Twist 101
KITCHEN WORKTOP	Rabac
KITCHEN DOOR	Cashmere
HANDLES	HA9058
SINK AND TAP	Black
WC FLOOR AND WALL TILE	Wall Tile: Rodano Taupe Floor Tile: Rivoli Blanco (Matt)
BATHROOM FLOOR AND WALL TILE	Wall Tile: Bottega Caliza Floor Tile: Image Dark
EN-SUITE FLOOR AND WALL TILE	Wall Tile: Rodano Taupe Floor Tile: Rivoli Blanco (Matt)
WARDROBE	Stone Grey
PLUMBING UPGRADE	Shower Over Bath, Outside Tap, Large Towel Warmer to En-Suite and Bathroom
ELECTRICAL UPGRADE	11x White Spotlights, External Security Light and External Socket
OTHER UPGRADES	Turf to Rear, Full Height Glass Splashback







We're ready, are you?

Reserve now

