

RDY  
2GO



Plot 201

Four bedroom home at Verve, Castleford

SERIES

# Stone

Inspired by the raw warmth of unpolished surface of stone, creating a feeling of serenity and safety. The rich textures and tones envelope you in a hug, welcoming you home.





# 1,356

Square foot home.

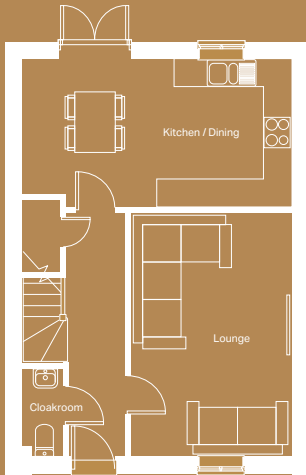
# 4 bedroom

Home over 3 floors.

# £4,775

Worth of interior designed upgrades.  
Including a turfed rear garden.



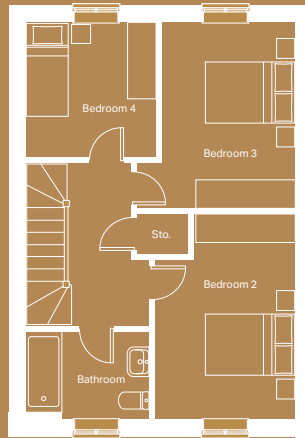


### Ground floor

Kitchen / Dining <sup>(max)</sup>  
5640mm x 3103mm

Lounge  
3333mm x 5093mm

Cloakroom <sup>(max)</sup>  
903mm x 1875mm



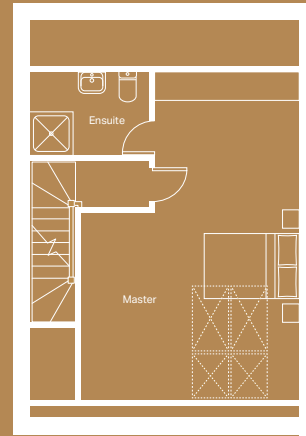
### First floor

Bedroom 2 <sup>(max)</sup>  
2963mm x 4324mm

Bedroom 3 <sup>(max)</sup>  
3357mm x 3924mm

Bedroom 4  
2754mm x 2850mm

Bathroom <sup>(max)</sup>  
2590mm x 1875mm



### Second floor

Master bedroom <sup>(max)</sup>  
4590mm x 6896mm

Ensuite <sup>(max)</sup>  
2501mm x 1772mm

STONE

# Specification

## FLOORING

Hallway Tiles Dover Caliza, Lounge, Stairs, Bed 1, Bed 2, Bed 3 and Bed 4 Lincoln Twist 101 Carpet

## KITCHEN WORKTOP

Rabac

## KITCHEN DOOR

Embossed Cashmere

## HANDLES

HA9058

## KITCHEN FLOOR TILE

Dover Caliza

## WC FLOOR AND WALL TILE

Dover Caliza Floor and Park Blanco Wall Tile

## BATHROOM FLOOR AND WALL TILE

Park Blanco Floor and Wall Tile

## EN-SUITE FLOOR AND WALL TILE

Park Blanco Floor and Wall Tile

## WARDROBE

Cashmere Frame and Panel

## PLUMBING UPGRADE

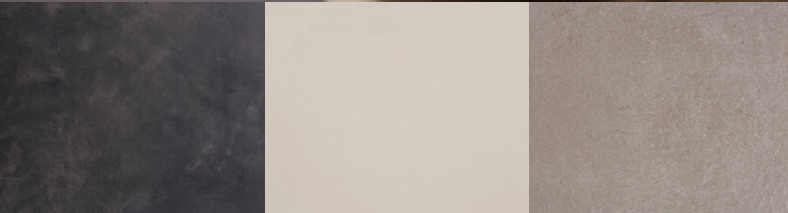
Shower Over Bath, Large Towel Warmer to En-Suite and Outside Tap

## ELECTRICAL UPGRADE

15x White Downlights

## OTHER UPGRADES

Turf to Rear Garden







# We're ready, are you?

Reserve now