

RDY
2GO



Plot 200

Four bedroom home at Verve, Castleford

SERIES

Sand

Inspired by the soft and subtle tones and texture of sand, its warm appearance washes over you in a sense of calm. Like the feeling of warm sand between your toes and the soft lap of the waves in the distance.

Tranquillity at its best.



1,356

Square foot home.

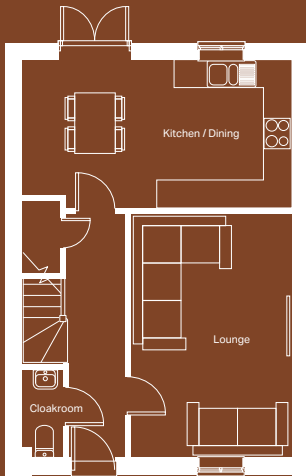
4 bedroom

Home over 3 floors.

£5,025

Worth of interior designed upgrades.
Including a turfed rear garden.



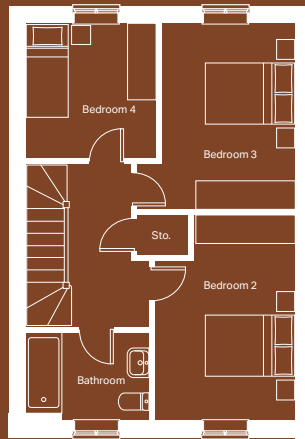


Ground floor

Kitchen / Dining ^(max)
5640mm x 3103mm

Lounge
3333mm x 5093mm

Cloakroom ^(max)
903mm x 1875mm



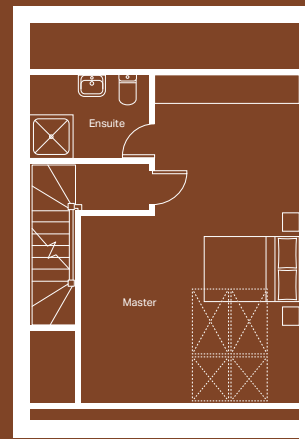
First floor

Bedroom 2 ^(max)
2963mm x 4324mm

Bedroom 3 ^(max)
3357mm x 3924mm

Bedroom 4
2754mm x 2850mm

Bathroom ^(max)
2590mm x 1875mm



Second floor

Master bedroom ^(max)
4590mm x 6896mm

Ensuite ^(max)
2501mm x 1772mm

SAND

Specification

FLOORING	Hallway Tiles Dover Caliza, Lounge, Stairs, Bed 1, Bed 2, Bed 3 and Bed 4 Lincoln Twist 101 Carpet
KITCHEN WORKTOP	Ipanema White
KITCHEN DOOR	Embossed Cashmere
HANDLES	HA9056
KITCHEN FLOOR TILE	Dover Caliza
WC FLOOR AND WALL TILE	Dover Caliza Floor and Park Blanco Wall Tile
BATHROOM FLOOR AND WALL TILE	Park Blanco Floor and Wall Tile
EN-SUITE FLOOR AND WALL TILE	Park Blanco Floor and Wall Tile
WARDROBE	Cashmere Frame and Panel
PLUMBING UPGRADE	Shower Over Bath, Large Towel Warmer to Bathroom and En-Suite and Outside Tap
ELECTRICAL UPGRADE	15x White Downlights
OTHER UPGRADES	Turf to Rear Garden







We're ready, are you?

Reserve now