

RDY  
2GO



Plot 56

Four bedroom home at Promise, Bolsover

SERIES

# Nature

Inspired by the natural depth and character of wood, with warm, earthy tones and grain-like textures bring a grounded feeling. A balanced space to belong, live and grow.



# 1,356

Square foot home.

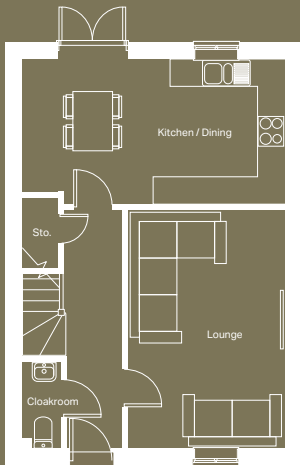
# 4 bedroom

Home over 2 floors.

# £9,179

Worth of interior designed upgrades.  
Including a turfed rear garden.



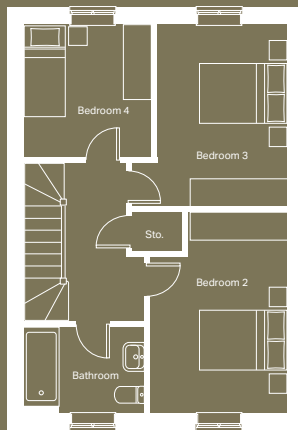


### Ground floor

Kitchen / Dining <sup>(max)</sup>  
5640mm x 3103mm

Lounge  
3333mm x 5093mm

Cloakroom <sup>(max)</sup>  
903mm x 1875mm



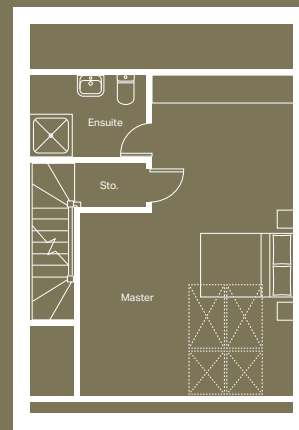
### First floor

Bedroom 2  
2963mm x 4324mm

Bedroom 3 <sup>(max)</sup>  
3357mm x 3924mm

Bedroom 4  
2754mm x 2850mm

Bathroom <sup>(max)</sup>  
2590mm x 1875mm



### Second floor

Master bedroom <sup>(max)</sup>  
4590mm x 6896mm

Ensuite <sup>(max)</sup>  
2501mm x 1772mm

# Specification

<b>FLOORING</b>	Kitchen/Diner, Hallway, Lounge and WC Tokyo Laminate and Stairs, Landing and All Bedrooms 139 Sierra Carpet
<b>KITCHEN WORKTOP</b>	Anthracite Fabric Metal
<b>KITCHEN DOOR</b>	Mondego Oak
<b>HANDLESS RAIL</b>	Grey
<b>WC WALL TILE</b>	Park Gris
<b>BATHROOM FLOOR AND WALL TILE</b>	Park Gris Floor and Wall Tile
<b>EN-SUITE FLOOR AND WALL TILE</b>	Park Gris Floor and Wall Tile
<b>WARDROBE</b>	Light Grey
<b>PLUMBING UPGRADE</b>	Shower Over Bath, Large Towel Warmer to Bathroom and En-Suite and an Outside Tap
<b>ELECTRICAL UPGRADE</b>	17x Spotlights, Plinth Lights, External Socket and External Security Light
<b>OTHER UPGRADES</b>	Turf to Rear Garden







# We're ready, are you?

Reserve now