

RDY  
2GO



Plot 51

Four bedroom home at Promise, Bolsover

SERIES

# Nature

Inspired by the natural depth and character of wood, with warm, earthy tones and grain-like textures bring a grounded feeling. A balanced space to belong, live and grow.



# 1,277

Square foot home.

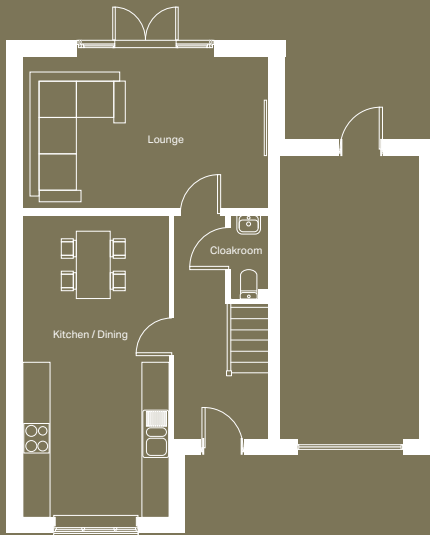
# 4 bedroom

Home over 2 floors.

# £8,006

Worth of interior designed upgrades.  
Including a turfed rear garden.



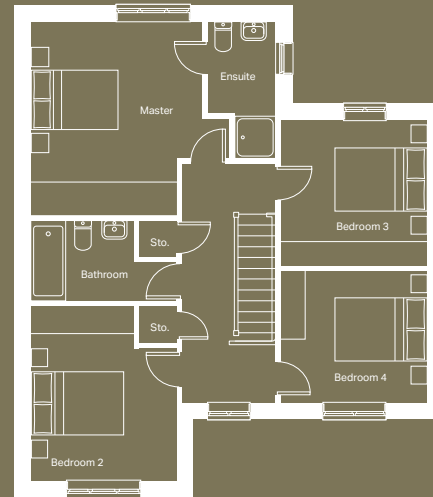


### Ground floor

Kitchen / Dining  
3171mm x 6506mm

Lounge  
5308mm x 3268mm

Cloakroom (max)  
862mm x 1815mm



### First floor

Master Bedroom (max)  
3715mm x 4188mm

Ensuite (max)  
1500mm x 2963mm

Bedroom 2 (max)  
3166mm x 3796mm

Bedroom 3 (max)  
3174mm x 3150mm

Bedroom 4  
3174mm x 2852mm

Bathroom (max)  
3148mm x 1712mm

# Specification

<b>FLOORING</b>	Hallway Dover Acero Tiles, Lounge, Stairs, Bed 1, Bed 2, Bed 3 and Bed 4 556 Lakemist Carpet
<b>KITCHEN WORKTOP</b>	Black Oak
<b>KITCHEN DOOR</b>	Light Grey
<b>KITCHEN FLOOR TILE</b>	Dover Acero
<b>HANDLESS RAIL</b>	Graphite
<b>WC FLOOR AND WALL TILE</b>	Dover Acero Floor and Wall Tile
<b>BATHROOM FLOOR AND WALL TILE</b>	Park Gris Floor and Wall Tile
<b>EN-SUITE FLOOR AND WALL TILE</b>	Park Gris Floor and Wall Tile
<b>WARDROBE</b>	Light Grey Frame and Panel
<b>PLUMBING UPGRADE</b>	Shower Over Bath, Large Towel Warmer to Bathroom and En-Suite and Outside Tap
<b>ELECTRICAL UPGRADE</b>	14x Brushed Chrome Downlights, External Double Socket and External Security Light
<b>OTHER UPGRADES</b>	Turf to Rear Garden







# We're ready, are you?

Reserve now

# 51