

RDY
2GO



Plot 93

Venice

Four bedroom home at Promise, Bolsover

SERIES

Concrete

Inspired by concrete and its muted grey palette, bringing a subtle industrial feel to your home. It's quietly confident. An understated yet bold choice.



1,277

Square foot home.

4 bedroom

Home over 2 floors.

£7,593

Worth of interior designed upgrades.
Including a turfed rear garden.



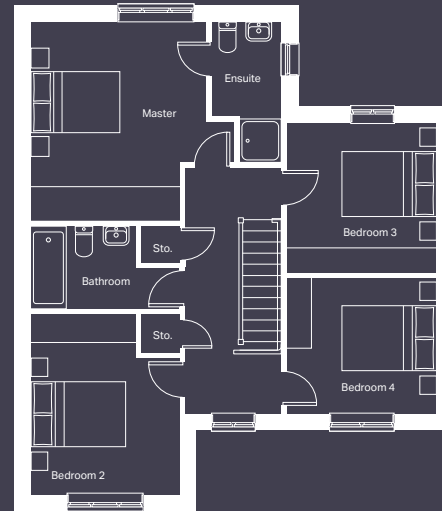


Ground floor

Kitchen / Dining
3171mm x 6506mm

Lounge
5308mm x 3268mm

Cloakroom (max)
862mm x 1815mm



First floor

Master Bedroom (max)
3715mm x 4188mm

Ensuite (max)
1500mm x 2963mm

Bedroom 2 (max)
3166mm x 3796mm

Bedroom 3 (max)
3174mm x 3150mm

Bedroom 4
3174mm x 2852mm

Bathroom (max)
3148mm x 1712mm

CONCRETE

Specification

FLOORING	Kartaca Laminate to Hallway, Lounge, Kitchen/Diner, Silver Creek Carpet to All Beds, Stairs and Landing
KITCHEN WORKTOP	Nero Granite
KITCHEN DOOR	Light Grey Chicago Concrete
HANDLESS RAIL	Graphite
WC FLOOR AND WALL TILE	Indic (Matt) Wall and Nast Grey Floor
BATHROOM FLOOR AND WALL TILE	Bottega Acero Wall and Dover Acero Floor
EN-SUITE FLOOR AND	Indic (Matt) Wall and Nast Grey Floor
WARDROBE	Grey Mirror
PLUMBING UPGRADE	Shower Over Bath, Large Towel Warmer to Bathroom and En-Suite and an Outside Tap
ELECTRICAL UPGRADE	x14 Spotlights, External Socket & External Security Light
OTHER UPGRADES	Full Height Laminated Splashback, Black Sink & Tap and Turf to Rear Garden







We're ready, are you?

Reserve now