

RDY  
2GO



Plot 54

Oporto

Four bedroom home at Promise, Bolsover

SERIES

# Nature

Inspired by the natural depth and character of wood, with warm, earthy tones and grain-like textures bring a grounded feeling. A balanced space to belong, live and grow.



# 1,356

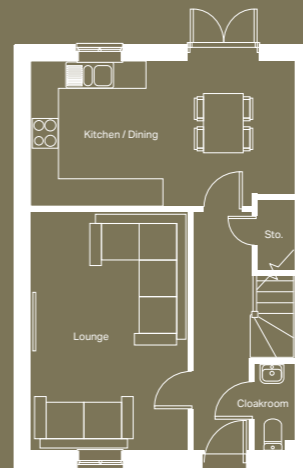
Square foot home.

# 4 bedroom

Home over 3 floors.

# £9,084

Worth of interior designed upgrades.  
Including a turfed rear garden.

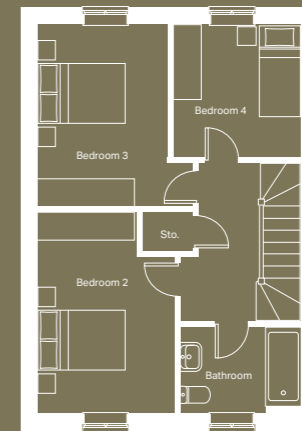


## Ground floor

Kitchen / Dining (max)  
5640mm x 3103mm

Lounge  
3333mm x 5093mm

Cloakroom (max)  
903mm x 1875mm



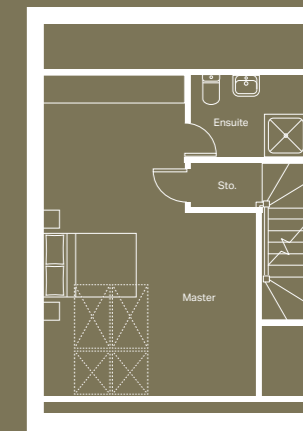
## First floor

Bedroom 2  
2963mm x 4324mm

Bedroom 3 (max)  
3357mm x 3924mm

Bedroom 4  
2754mm x 2850mm

Bathroom (max)  
2590mm x 1875mm



## Second floor

Master bedroom (max)  
4590mm x 6896mm

Ensuite (max)  
2501mm x 1772mm



NATURE

## Specification

FLOORING	Prague Laminate to Hallway and Kitchen/ Diner, 556 Lakemist Carpet to Lounge, All Beds, Stairs and Landing
KITCHEN WORKTOP	Walnut Appalaches
KITCHEN DOOR	Light Chicago Concrete
HANDLELESS RAIL	Grey
WC WALL TILE	Ferroker Niquel Floor Tile and Shine Niquel Wall Tile
BATHROOM FLOOR AND WALL TILE	Ferroker Niquel Floor Tile and Shine Niquel Wall Tile
EN-SUITE FLOOR AND WALL TILE	Ferroker Niquel Floor Tile and Shine Niquel Wall Tile
WARDROBE	Stone grey
PLUMBING UPGRADE	Large Towel Warmer to Bathroom and En-Suite, Shower Over Bath and Outside Tap
ELECTRICAL UPGRADE	11x Brushed Chrome Spotlights, External Double Socket, Additional Pendant to Kitchen
OTHER UPGRADES	Turf to Rear Garden





# We're ready, are you?

Reserve now

54