

RDY
2GO



Plot 50

Four bedroom home at Promise, Bolsover

SERIES

Nature

Inspired by the natural depth and character of wood, with warm, earthy tones and grain-like textures bring a grounded feeling. A balanced space to belong, live and grow.



1,277

Square foot home.

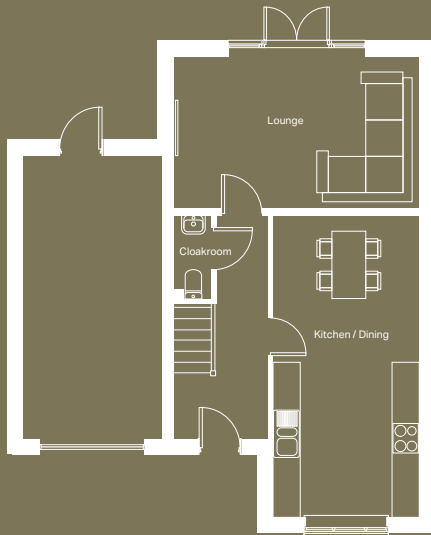
4 bedroom

Home over 2 floors.

£8,711

Worth of interior designed upgrades.
Including a turfed rear garden.



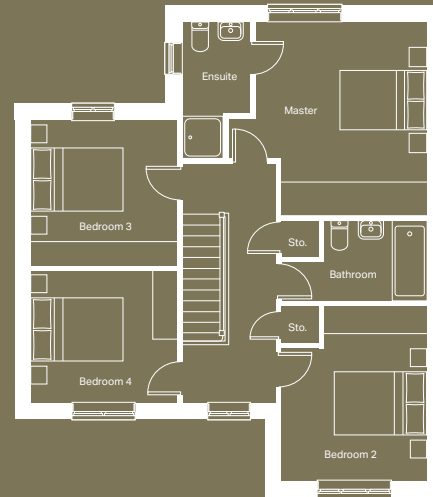


Ground floor

Kitchen / Dining
3171mm x 6506mm

Lounge
5308mm x 3268mm

Cloakroom (max)
862mm x 1815mm



First floor

Master Bedroom (max)
3715mm x 4188mm

Ensuite (max)
1500mm x 2963mm

Bedroom 2 (max)
3166mm x 3796mm

Bedroom 3 (max)
3174mm x 3150mm

Bedroom 4
3174mm x 2852mm

Bathroom (max)
3148mm x 1712mm

Specification

FLOORING	Hallway Tiles Dover Caliza, Lounge Laminate Tokyo, Stairs, Landing, Bed 1, Bed 2, Bed 3 and Bed 4 556 Lakemist Carpet
KITCHEN WORKTOP	Mondego Oak
KITCHEN DOOR	Light Grey
KITCHEN FLOOR TILE	Dover Caliza
HANDLESS RAIL	Graphite
WC FLOOR AND WALL TILE	Dover Caliza Floor and Wall Tile
BATHROOM FLOOR AND WALL TILE	Rodano Acero Floor and Wall Tile
EN-SUITE FLOOR AND WALL TILE	Rodano Acero Floor and Wall Tile
WARDROBE	Cashmere Frame and Sand Orleans Panel
PLUMBING UPGRADE	Large Towel Warmer to Bathroom and En-Suite, Shower Over Bath and Outside Tap
ELECTRICAL UPGRADE	14x Stainless Steel Spotlights, External Double Socket and External Security Light
OTHER UPGRADES	Turf to Rear Garden







We're ready, are you?

Reserve now

50