

RDY
2GO



Plot 553

Four bedroom home at Kudos, Leeds

SERIES

Concrete

Inspired by concrete and its muted grey palette, bringing a subtle industrial feel to your home. It's quietly confident. An understated yet bold choice.



1,345

Square foot home.

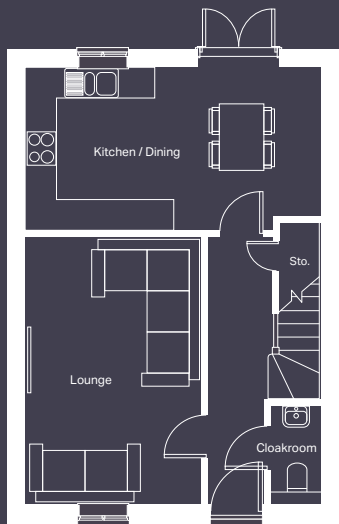
4 bedroom

Home over 3 floors.

£7,488

Worth of interior designed upgrades.



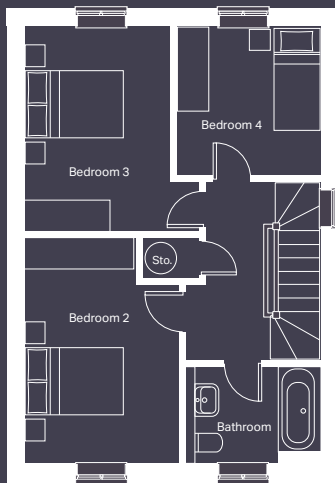


Ground floor

Kitchen / Dining (max)
5640mm x 3100mm

Lounge (max)
3330mm x 5090mm

Cloakroom (max)
995mm x 1832mm



First floor

Bedroom 2 (max)
2797mm x 4322mm

Bedroom 3 (min)
2797mm x 3925mm

Bedroom 4 (max)
2750mm x 2847mm

Bathroom (min)
2750mm x 1895mm



Second floor

Master bedroom (max)
4568mm x 3885mm

Ensuite (min)
2295mm x 1695mm

Seating (max)
3252mm x 2863mm

CONCRETE

Specification

| | |
|-------------------------------------|---|
| FLOORING | Carpet to lounge, hallway, stairs, landing and all beds Lincoln Twist 105 |
| KITCHEN WORKTOP | Light Grey Valmisino Marble |
| KITCHEN DOOR | Dust Grey |
| HANDLESS RAIL | Grey |
| KITCHEN FLOOR TILE | Rivoli Bianco |
| WC FLOOR AND WALL TILE | Rivoli Bianco Floor and Indic Matt Wall Tile |
| BATHROOM FLOOR AND WALL TILE | Dover Acero Floor and Bottega Acero Wall Tile |
| EN-SUITE FLOOR AND WALL TILE | Bali Nieve Floor and Bottega Caliza Wall Tile |
| PLUMBING UPGRADE | Shower Over Bath |
| ELECTRICAL UPGRADE | 7x spotlights |
| WARDROBE | Cashmere |







We're ready, are you?

Reserve now