

RDY  
2GO



Plot 37

Oporto

Four bedroom home at Cherish, Shirland

SERIES

# Nature

Inspired by the natural depth and character of wood, with warm, earthy tones and grain-like textures bring a grounded feeling. A balanced space to belong, live and grow.





# 1,345

Square foot home.

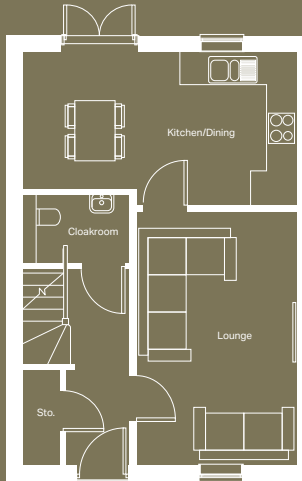
# 4 bedroom

Home over 3 floors.

# £10,341

Worth of interior designed upgrades.  
Including a turfed rear garden.



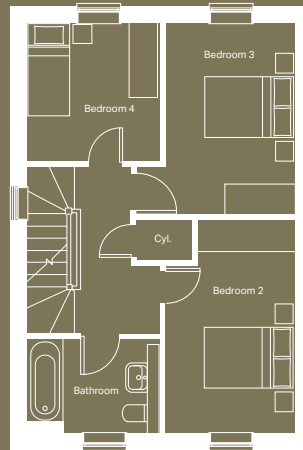


### Ground floor

Kitchen/Dining <sup>(max)</sup>  
5624mm x 3088mm

Lounge  
3316mm x 5095mm

Cloakroom  
810mm x 1571mm



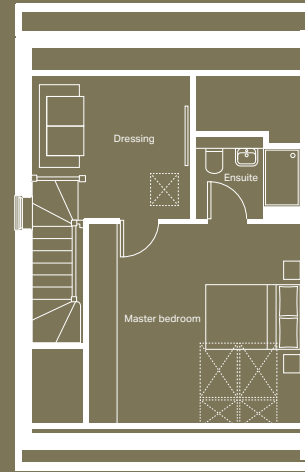
### First floor

Bedroom 2 <sup>(max)</sup>  
2800mm x 4337mm

Bedroom 3 <sup>(max)</sup>  
3360mm x 3905mm

Bedroom 4  
2731mm x 2840mm

Bathroom



### Second floor

Master bedroom  
4551mm x 4098mm

Ensuite  
2279mm x 1695mm

Dressing  
3252mm x 2916mm

# Specification

<b>FLOORING</b>	Country Oak and Lincoln Twist 101
<b>KITCHEN WORKTOP</b>	Grey Bardolino Oak
<b>KITCHEN DOOR</b>	Light Grey
<b>HANDLES</b>	White
<b>WC FLOOR AND WALL TILE</b>	Bottega Caliza Wall and Nast Grey Floor
<b>BATHROOM FLOOR AND WALL TILE</b>	Dover Modern Line Acero Wall and Nast Grey Floor
<b>EN-SUITE FLOOR AND WALL TILE</b>	Bottega Caliza Wall and Nast Grey Floor
<b>WARDROBE</b>	Cashmere
<b>PLUMBING UPGRADE</b>	Small Towel Warmer to Bathroom and En-suite, Shower Over Bath, Outside Tap
<b>ELECTRICAL UPGRADE</b>	12x White Spotlights and External Socket
<b>OTHER UPGRADES</b>	Full height laminate splashback, Black Sink & Tap, Turf to Rear









# We're ready, are you?

Reserve now