

RDY
2GO



Plot 36

Oporto

Four bedroom home at Cherish, Shirland

SERIES

Concrete

Inspired by concrete and its muted grey palette, bringing a subtle industrial feel to your home. It's quietly confident. An understated yet bold choice.



1,345

Square foot home.

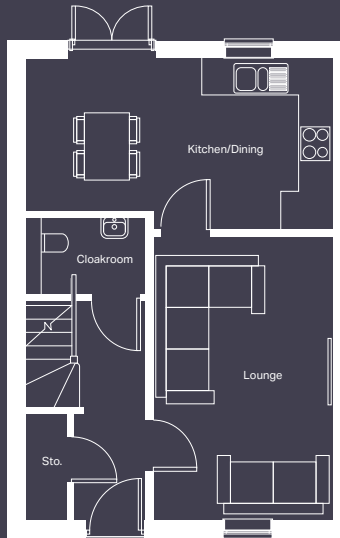
4 bedroom

Home over 3 floors.

£9,990

Worth of interior designed upgrades.
Including a turfed rear garden.



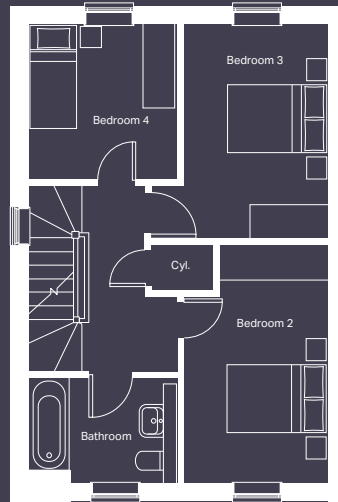


Ground floor

Kitchen/Dining (max)
5624mm x 3088mm

Lounge
3316mm x 5095mm

Cloakroom
810mm x 1571mm



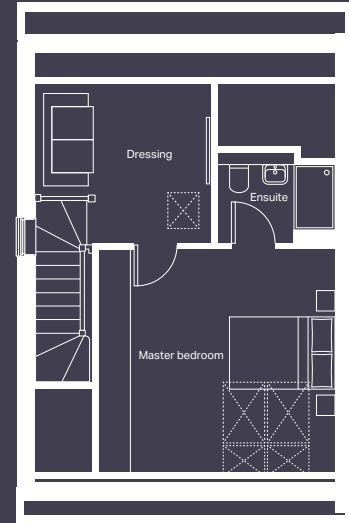
First floor

Bedroom 2 (max)
2800mm x 4337mm

Bedroom 3 (max)
3360mm x 3905mm

Bedroom 4
2731mm x 2840mm

Bathroom



Second floor

Master bedroom
4551mm x 4098mm

Ensuite
2279mm x 1695mm

Dressing
3252mm x 2916mm

CONCRETE

Specification

FLOORING	Driftwood Oak and Lincoln Twist 105
KITCHEN WORKTOP	Light Grey Valmasino Marble
KITCHEN DOOR	Dust Grey
HANDLES	Grey
WC FLOOR AND WALL TILE	Indic Matte Wall Tile & Image Dark Floor Tile
BATHROOM FLOOR AND WALL TILE	Japan Marine Wall Tile & Nast Grey Floor Tile
EN-SUITE FLOOR AND WALL TILE	Indic Matte Wall Tile & Image Dark Floor Tile
WARDROBE	Grey Mirror
PLUMBING UPGRADE	Small Towel Warmer to Bathroom and En-suite, Shower Over Bath, Outside Tap
ELECTRICAL UPGRADE	12x White Spotlights
OTHER UPGRADES	Full height laminate splashback, Black Sink & Tap, Turf to Rear







We're ready, are you?

Reserve now