

RDY  
2GO



Plot 165

Naples

Five bedroom home at Breathe, Kiveton



SERIES

# Concrete

Inspired by concrete and its muted grey palette, bringing a subtle industrial feel to your home. It's quietly confident. An understated yet bold choice.





# 2,114

Square foot home.

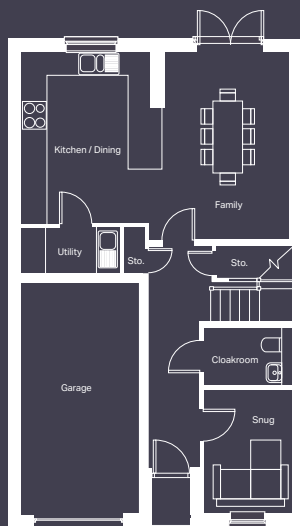
# 5 bedroom

Home over 3 floors.

# £14,289

Worth of interior designed upgrades.  
Including Integrated Appliances.





### Ground floor

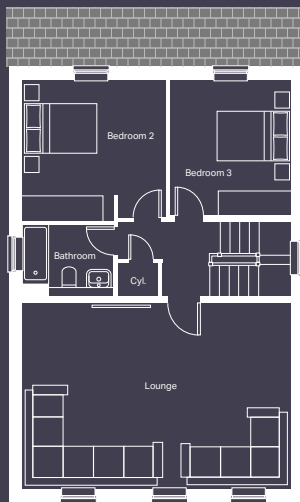
Kitchen/Dining  
3308mm x 4452mm

Family Room  
3252mm x 4872mm

Snug  
2270mm x 3219mm

Cloakroom  
2015mm x 1500mm

Utility  
2532mm x 1215mm



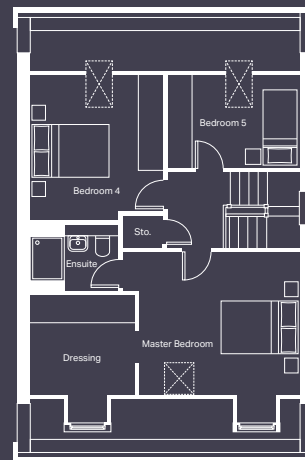
### First floor

Lounge  
6995mm x 4810mm

Bedroom 2  
3765mm x 3584mm

Bedroom 3  
3165mm x 3527mm

Bathroom  
2403mm x 1700mm



### Second floor

Master bedroom  
4175mm x 3733mm

Dressing  
2732mm x 2619mm

Ensuite  
2303mm x 1444mm

Bedroom 4  
3455mm x 3830mm

Bedroom 5  
3452mm x 2449mm

CONCRETE

## Specification

<b>FLOORING</b>	Driftwood Oak and Lincoln Twist 105
<b>KITCHEN WORKTOP</b>	Light Grey Valmasino Marble
<b>KITCHEN DOOR</b>	Dust Grey
<b>HANDLESS RAIL</b>	Grey
<b>WC FLOOR AND WALL TILE</b>	Indic (Matt) Wall and Image Dark Floor
<b>BATHROOM FLOOR AND WALL TILE</b>	Japan Marine Wall and Nast Grey Floor
<b>EN-SUITE FLOOR AND WALL TILE</b>	Indic (Matt) Wall and Image Dark Floor
<b>WARDROBES</b>	Grey Mirror
<b>PLUMBING UPGRADE</b>	Large Towel Warmer to Bathroom and En-suite, Shower Over Bath and Outside Tap
<b>ELECTRICAL UPGRADE</b>	x17 White Spotlights, External Security Light, External Double Sockets
<b>OTHER UPGRADES</b>	Turf to Rear, Black sink









# We're ready, are you?

Reserve now