

RDY
2GO



Plot 138

Bologna

Four bedroom home at Breathe, Kiveton

SERIES

Stone

Inspired by the raw warmth of unpolished surface of stone, creating a feeling of serenity and safety. The rich textures and tones envelope you in a hug, welcoming you home.



1,235

Square foot home.

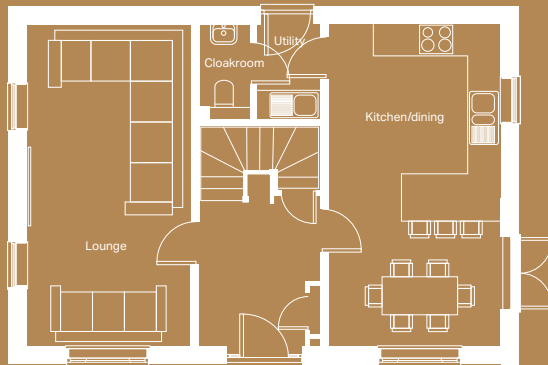
4 bedroom

Home over 2 floors.

£12,391

Worth of interior designed upgrades.
Including a turfed rear garden.





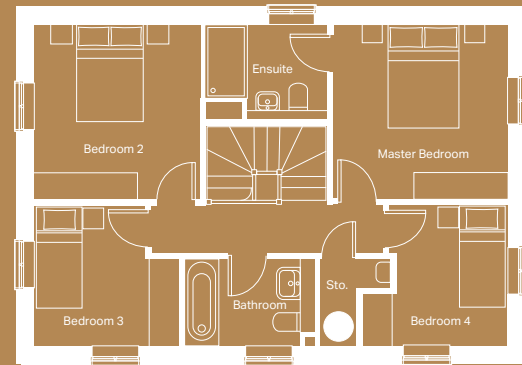
Ground floor

Kitchen/dining ^(max)
3327mm x 6203mm

Lounge
3173mm x 6203mm

Utility ^(max)
1250mm x 1953mm

Cloakroom
1000mm x 1813mm



First floor

Master bedroom
3384mm x 3374mm

Bedroom 4 ^(max)
2813mm x 2740mm

Ensuite ^(min)
2335mm x 1863mm

Bathroom ^(min)
2517mm x 1725mm

Bedroom 2
3230mm x 3372mm

Bedroom 3 ^(max)
2809mm x 2743mm

Specification

FLOORING	Honey Oak and Lincoln Twist 101
KITCHEN WORKTOP	Cupria Slate
KITCHEN DOOR	Stone Grey
HANDLES	Grey
WC FLOOR AND WALL TILE	Rodano Taupe Wall and Bali Nieve Floor
BATHROOM FLOOR AND WALL TILE	Bottega Acero Wall and Image Dark Floor
EN-SUITE FLOOR AND WALL TILE	Rodano Taupe Wall and Bali Nieve Floor
PLUMBING UPGRADE	Large Towel Warmer to Bathroom and En-suite, Shower Over Bath
ELECTRICAL UPGRADE	18x Spotlights, External Light and External Socket
OTHER UPGRADES	Black sink & tap, Turf to Rear







We're ready, are you?

Reserve now