

RDY
2GO



Plot 61

Malmo

Three bedroom home at Attraction, Kingswood

SERIES

Sand

Inspired by the soft and subtle tones and texture of sand, its warm appearance washes over you in a sense of calm. Like the feeling of warm sand between your toes and the soft lap of the waves in the distance.

Tranquillity at its best.



998

Square foot home.

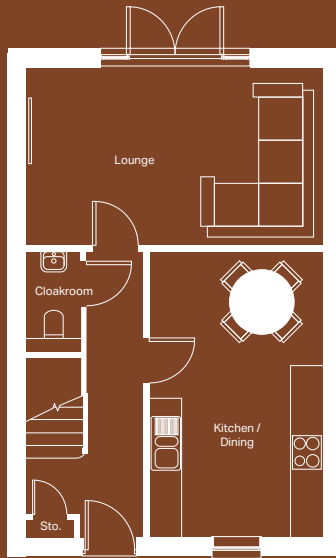
3 bedroom

Home over 2 floors.

£10,921

Worth of interior designed upgrades.
Including a turfed rear garden.



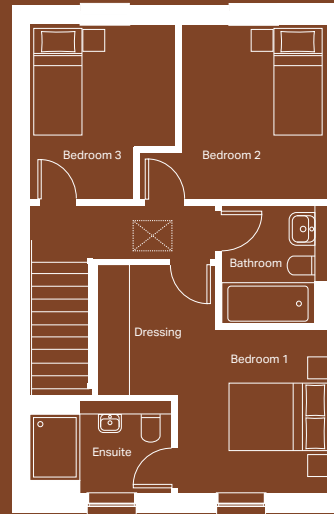


Ground floor

Kitchen / Dining
3177mm x 5222mm

Lounge
5410mm x 3245mm

Cloakroom
998mm x 1848mm



First floor

Bedroom 1
2755mm x 3000mm

Dressing
2160mm x 2398mm

Ensuite
2562mm x 1691mm

Bedroom 2
2685mm x 3200mm

Bedroom 3
2632mm x 3200mm

Bathroom
1943mm x 2175mm

SAND

Specification

FLOORING	Frosted Oak and Lincoln Twist 101
KITCHEN WORKTOP	Cascina Pine
KITCHEN DOOR	Cashmere Woodgrain
HANDLESS RAIL	HA9056
WC FLOOR AND WALL TILE	Bottega Caliza Wall and Bali Nieve Floor
BATHROOM FLOOR AND WALL TILE	Spiga Bottega White Wall and Nast Grey Floor
EN-SUITE FLOOR AND WALL TILE	Bottega Caliza Wall and Bali Nieve Floor
WARDROBE	Cashmere
PLUMBING UPGRADE	Large Towel Warmer to Bathroom and En-suite, Shower Over Bath and Outside Tap
ELECTRICAL UPGRADE	x6 spotlights, external double socket
OTHER UPGRADES	Turf to rear garden, integrated appliances, upgraded kitchen cupboard door





strata

RDY
2GO
COLLECTION



We're ready, are you?

Reserve now