

RDY  
2GO



Plot 60

Malmö

Three bedroom home at Attraction, Kingswood

SERIES

# Concrete

Inspired by concrete and its muted grey palette, bringing a subtle industrial feel to your home. It's quietly confident. An understated yet bold choice.



# 998

Square foot home.

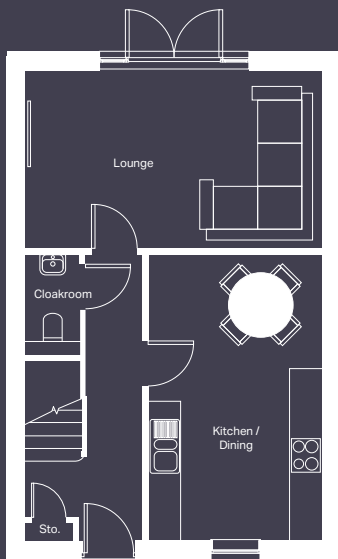
# 3 bedroom

Home over 2 floors.

# £10,769

Worth of interior designed upgrades.  
Including Integrated Appliances.





### Ground floor

---

Kitchen / Dining  
3177mm x 5222mm

---

Lounge  
5410mm x 3245mm

---

Cloakroom  
998mm x 1848mm

---



### First floor

---

Bedroom 1  
2755mm x 3000mm

---

Dressing  
2160mm x 2398mm

---

Ensuite  
2562mm x 1691mm

---

Bedroom 2  
2685mm x 3200mm

---

Bedroom 3  
2632mm x 3200mm

---

Bathroom  
1943mm x 2175mm

---

CONCRETE

## Specification

FLOORING	Driftwood Oak and Lincoln Twist 105
KITCHEN WORKTOP	Ipenama Grey
KITCHEN DOOR	Anthracite Gloss (upgrade)
HANDLESS RAIL	HA9058
WC FLOOR AND WALL TILE	Indic (Matt) Wall and Nast Grey Floor
BATHROOM FLOOR AND WALL TILE	Dover Modern Line Acero Wall and Dover Acero Floor
EN-SUITE FLOOR AND WALL TILE	Indic (Matt) Wall and Nast Grey Floor
WARDROBE	Light Grey
PLUMBING UPGRADE	Large Towel Warmer to Bathroom and En-suite, Shower Over Bath and Outside Tap
ELECTRICAL UPGRADE	x6 spotlights, external double socket
OTHER UPGRADES	Turf to rear garden, integrated appliances







# We're ready, are you?

Reserve now

# 60