

RDY
2GO



Plot 426

Emerald

Four bedroom home at Attraction, Kingswood

SERIES

Marble

Inspired by the soft ripple of white marble,
its fresh appearance and polished texture
creates a calm and peaceful space.

Inhale, "You're home".



1,182

Square foot home.

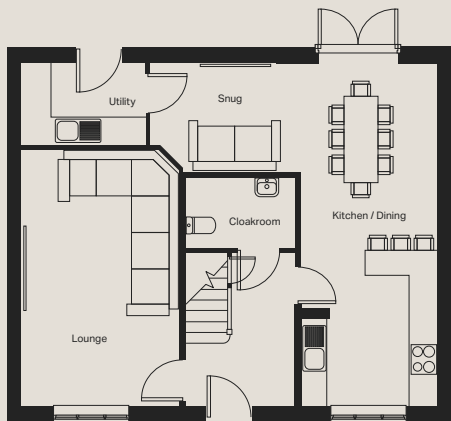
4 bedroom

Home over 2 floors.

£11,922

Worth of interior designed upgrades.
Including a turfed rear garden.





Ground floor

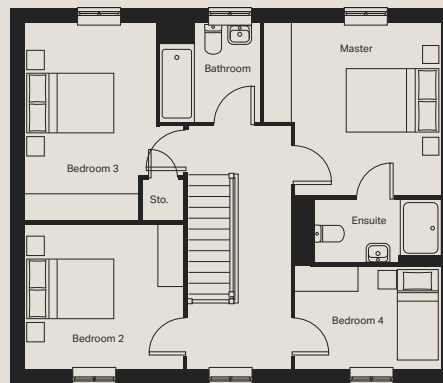
Kitchen / Dining (max)
2915mm x 7384mm

Snug (max)
3254mm x 2336mm

Lounge (max)
3327mm x 5519mm

Utility
2633mm x 1777mm

Cloakroom
2350mm x 1502mm



First floor

Master Bedroom (max)
3711mm x 3694mm

Ensuite
2699mm x 1350mm

Bedroom 2
3390mm x 3077mm

Bedroom 3 (min)
2800mm x 4218mm

Bedroom 4
3098mm x 2176mm

Bathroom
2141mm x 2102mm

MARBLE

Specification

FLOORING	Fontana Blanco Wall and Bali Nieve Floor
KITCHEN WORKTOP	Ipenama White
KITCHEN DOOR	Embossed White
HANDLES	HA9056
KITCHEN FLOOR TILES	Bali Nieve
WC FLOOR AND WALL TILE	Bali Nieve Floor and Fontana Wall Tile
BATHROOM FLOOR AND WALL TILE	Rivoli Blanco Floor and China Blanco Wall Tile
EN-SUITE FLOOR AND WALL TILE	Bali Nieve Floor and Fontana Wall Tile
WARDROBE	Porcelain Matt with Handle
PLUMBING UPGRADE	Large Towel Warmer to Bathroom and En-suite, Shower Over Bath and Outside Tap
ELECTRICAL UPGRADE	15x White Spotlights, External Light and External Socket
OTHER UPGRADES	Turf to Rear







We're ready, are you?

Reserve now

