

RDY  
2GO GENEVA  
ANTHEM, BEVERLEY

39



A woman is shown in profile, facing right, against a warm, golden-brown background. She is wearing a dark, form-fitting top. The lighting is dramatic, highlighting her features and the texture of the background. The text 'I am CONFIDENT' is overlaid on the image. 'I am' is in a white, italicized serif font, and 'CONFIDENT' is in a large, white, bold, sans-serif font.

*I am*  
**CONFIDENT**



Combining bold, durable hues with subtle neutrals, this palette achieves a strong yet sophisticated aesthetic designed to endure everyday life. Inspired by enduring materials like walnut wood and leather, it offers a solid, adaptable style. Perfect for crafting timeless, versatile spaces, this palette embodies strength and resilience.

# SPECIFICATION



LAMINATE



CARPET



CLOAKROOM & ENSUITE WALL TILE



KITCHEN WORKTOP



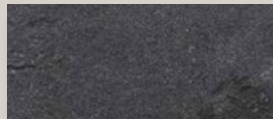
KITCHEN CUPBOARD DOORS



CLOAKROOM & ENSUITE FLOOR TILE



BATHROOM WALL TILE



BATHROOM FLOOR TILE

## FLOORING

Lincoln Twist 101 and Honey Oak

## KITCHEN WORKTOP

Scivaro Slate

## KITCHEN DOOR

Castello Oak Woodgrain

## HANDLESS RAIL

Grey

## KITCHEN APPLIANCES

Washing Machine, 50/50 Fridge freezer, Oven, Hob and Dishwasher

## WC FLOOR AND WALL TILE

Rodano Taupe Wall Tile  
Rivoli Blanco Floor Tile

## BATHROOM FLOOR AND WALL TILE

Bottega Caliza Wall Tile  
and Image Dark Floor Tile

## EN-SUITE FLOOR AND WALL TILE

Rodano Taupe Wall Tile  
and Rivoli Blanco Floor Tile

## PLUMBING UPGRADE

Outside Tap

## ELECTRICAL UPGRADE

6 Spotlights

## OTHER UPGRADES

Intregated appliances & Turf to Rear Garden





# 1,204

Square foot home.



# 3 bedroom

Home over 3 floors.



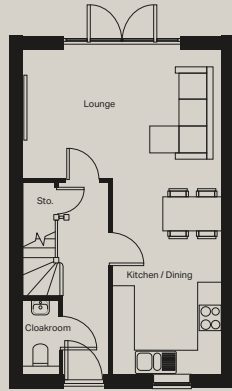
# £17,085

Worth of interior designed upgrades, including a turfed rear garden.

Images and layouts are for illustrative purposes only and may vary. For an accurate representation of your home, please consult the relevant plot-specific technical drawings. Ask your Experience Manager for more details.

# FLOOR PLAN

Total floor area 1204 SQFT approx.

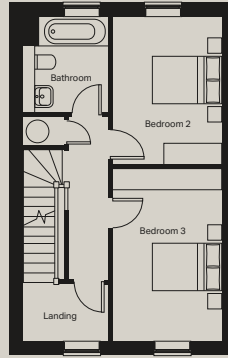


## Ground floor

Kitchen / Dining (max)  
2675mm x 4786mm

Lounge (max)  
4904mm x 3185mm

Cloakroom (max)  
850mm x 1737mm

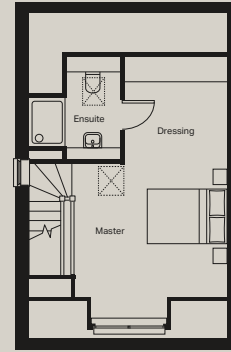


## First floor

Bedroom 2 (max)  
2664mm x 2733mm

Bedroom 3 (max)  
2664mm x 3659mm

Bathroom (max)  
2077mm x 2343mm



## Second floor

Master bedroom (max)  
3700mm x 3716mm

Dressing (within Bedroom-max)  
2456mm x 2305mm

Ensuite (max)  
2238mm x 2355mm

Images and layouts are for illustrative purposes only and may vary. For an accurate representation of your home, please consult the relevant plot-specific technical drawings. Ask your Experience Manager for more details.

# STYLING INSPIRATION

*adaptable*



*passionate*

*charismatic*



*confident*

strata

**RDY**  
**2GO**  
COLLECTION



Reserve now

39