

GENEVA  
ANTHEM, BEVERLEY

RDY  
2GO

34



A woman is shown in profile, facing right, against a warm, golden-brown background. She is wearing a dark, form-fitting top. The lighting is dramatic, highlighting her features and the texture of the background. The text 'I am CONFIDENT' is overlaid on the image. 'I am' is in a white, italicized serif font, and 'CONFIDENT' is in a large, white, bold, sans-serif font.

*I am*  
**CONFIDENT**



Combining bold, durable hues with subtle neutrals, this palette achieves a strong yet sophisticated aesthetic designed to endure everyday life. Inspired by enduring materials like walnut wood and leather, it offers a solid, adaptable style. Perfect for crafting timeless, versatile spaces, this palette embodies strength and resilience.

# SPECIFICATION



LAMINATE



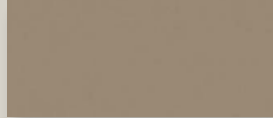
CARPET



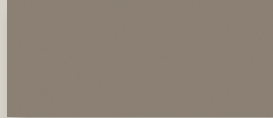
CLOAKROOM & ENSUITE WALL TILE



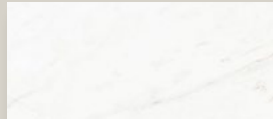
KITCHEN WORKTOP



KITCHEN CUPBOARD DOORS



WARDROBE DOOR



CLOAKROOM & ENSUITE FLOOR TILE



BATHROOM WALL TILE



BATHROOM FLOOR TILE

## FLOORING

Lincoln Twist 101 and Honey Oak

## KITCHEN WORKTOP

Scivaro Slate

## KITCHEN DOOR

Stone Grey Matt

## HANDLESS RAIL

Graphite

## WARDROBE DOOR

Stone Grey

## WC FLOOR AND WALL TILE

Rodano Taupe Wall Tile  
and Rivoli Blanco Floor Tile

## BATHROOM FLOOR AND WALL TILE

Bottega Caliza Wall Tile  
and Image Dark Floor Tile

## EN-SUITE FLOOR AND WALL TILE

Rodano Taupe Wall Tile  
and Rivoli Blanco Floor Tile

## PLUMBING UPGRADE

Outside Tap & Shower over Bath

## ELECTRICAL UPGRADE

6x Spotlights, External Double Socket

## OTHER UPGRADES

Intregrated appliances





**1,204**

Square foot home.



**3 bedroom**

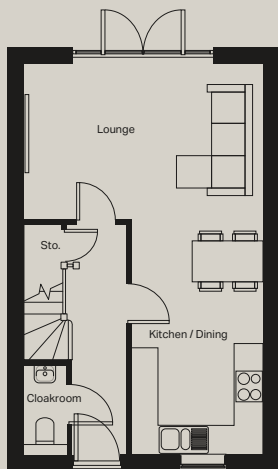
Home over 3 floors.



**£17,158**

Worth of interior designed  
upgrades.

# FLOOR PLAN

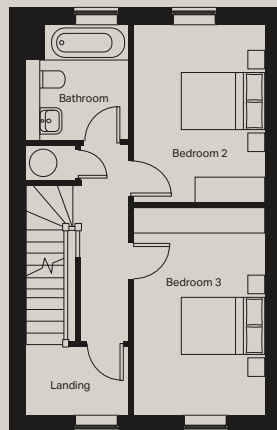


## Ground floor

Kitchen / Dining (max)  
2675mm x 4786mm

Lounge (max)  
4904mm x 3185mm

Cloakroom (max)  
850mm x 1737mm

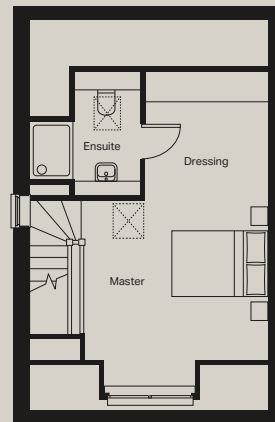


## First floor

Bedroom 2 (max)  
2664mm x 2733mm

Bedroom 3 (max)  
2664mm x 3659mm

Bathroom (max)  
2077mm x 2343mm



## Second floor

Master bedroom (max)  
3700mm x 3716mm

Dressing (within Bedroom- max)  
2456mm x 2305mm

Ensuite (max)  
2238mm x 2355mm

Images and layouts are for illustrative purposes only and may vary. For an accurate representation of your home, please consult the relevant plot-specific technical drawings. Ask your Experience Manager for more details.

# STYLING INSPIRATION

*adaptable*



*passionate*



*charismatic*



*confident*



34

Reserve now