

RDY  
2GO



Plot 134

Four bedroom home at Anthem, Beverley

SERIES

# Stone

Inspired by the raw warmth of unpolished surface of stone, creating a feeling of serenity and safety. The rich textures and tones envelope you in a hug, welcoming you home.



# 1,447

---

Square foot home.

# 4 bedroom

---

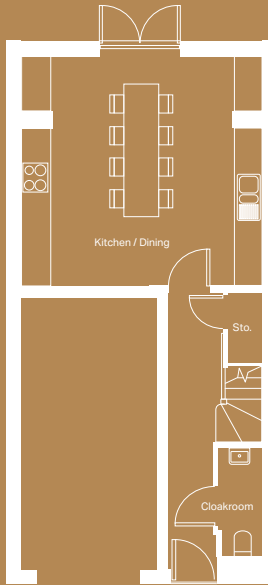
Home over 3 floors.

# £9,875

---

Worth of interior designed upgrades.  
Including a turfed rear garden.

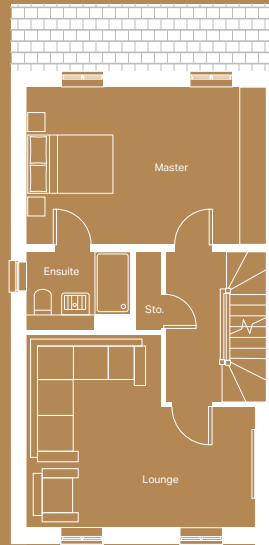




### Ground floor

Kitchen / Dining (max)  
5289mm x 5000mm

Cloakroom (max)  
990mm x 2400mm

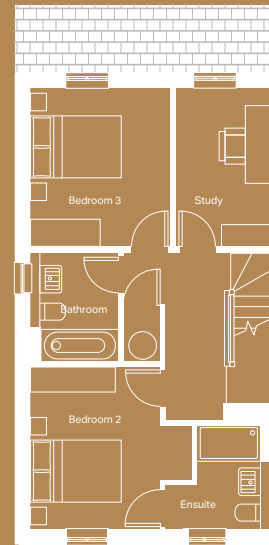


### First floor

Lounge (max)  
5000mm x 4243mm

Master Bedroom  
5289mm x 3485mm

Ensuite (max)  
2265mm x 1485mm



### Second floor

Bedroom 2 (max)  
3403mm x 3578mm

Ensuite (max)  
2375mm x 2338mm

Bedroom 3 (max)  
3091mm x 3484mm

Study  
2100mm x 3484mm

Bathroom (max)  
1700mm x 2370mm

STONE

# Specification

FLOORING	Hallway Tiles Park Gris, Lounge, Stairs, Landing, Bed 1, Bed 2, Bed 3 and Bed 4 Lincoln Twist 101 Carpet
KITCHEN WORKTOP	Concrete Pearl Grey
KITCHEN DOOR	Delta Cashmere
KITCHEN FLOOR TILE	Park Gris
HANDLESS RAIL	Stainless Steel
WC FLOOR AND WALL TILE	Park Gris Floor and Wall Tile
BATHROOM FLOOR AND WALL TILE	Park Gris Floor and Wall Tile
EN-SUITE 1 FLOOR AND WALL TILE	Park Gris Floor and Wall Tile
EN-SUITE 2 FLOOR AND WALL TILE	Park Gris Floor and Wall Tile
WARDROBE	Bed 1 Cashmere Frame and Panel
PLUMBING UPGRADE	Shower Over Bath, Small Towel Warmer to En-Suite and Large Towel Warmer to Bathroom
ELECTRICAL UPGRADE	16x Polished Chrome Downlights
OTHER UPGRADES	Turf to Rear Garden







# We're ready, are you?

Reserve now

