

RDY
2GO



Plot 87

Four bedroom home at Anthem, Beverley

SERIES

Slate

Inspired by deep tones and texture of natural slate, bringing depth and drama. These empowering textures and colours will spark something within. Unleash your creativity, dare to be bold; you hold all the power.



1,345

Square foot home.

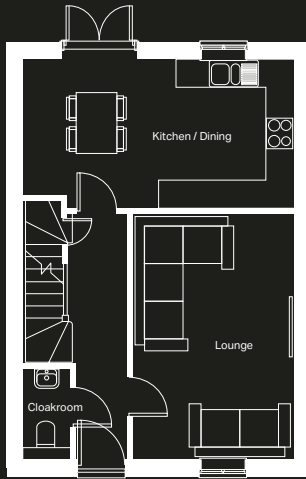
4 bedroom

Home over 3 floors.

£4,447

Worth of interior designed upgrades.
Including Towel Warmers.



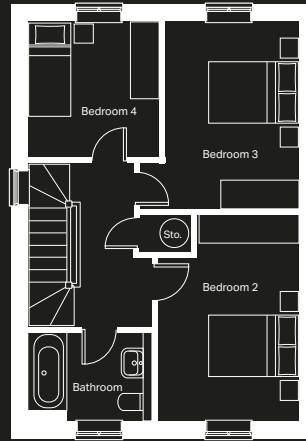


Ground floor

Kitchen / Dining (max)
5645mm x 3105mm

Lounge (max)
3335mm x 5095mm

Cloakroom (max)
1000mm x 1675mm



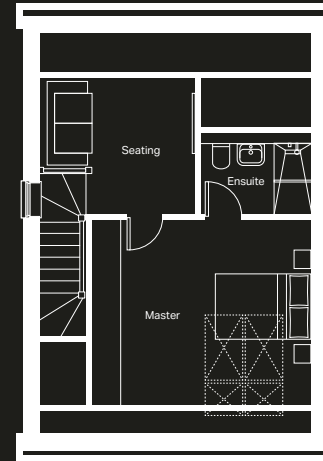
First floor

Bedroom 2 (max)
2960mm x 4327mm

Bedroom 3 (min)
2797mm x 3930mm

Bedroom 4 (max)
2755mm x 2852mm

Bathroom (min)
2380mm x 1900mm



Second floor

Master bedroom (max)
4568mm x 3890mm

Ensuite (min)
2295mm x 1475mm

Seating (max)
3257mm x 2868mm

SLATE

Specification

FLOORING	Hallway Tile Ferroker Niquel, Lounge and Bed 1 Driftwood Oak Laminate, Stairs, Landing, Bed 2, Bed 3 and Bed 4 Lincoln Twist 105 Carpet
KITCHEN WORKTOP	Concrete Anthracite
KITCHEN DOOR	Delta Silk Grey
HANDLESS RAIL	Stainless Steel
KITCHEN FLOOR TILE	Ferroker Niquel
WC FLOOR AND WALL TILE	Ferroker Niquel Floor and Shine Niquel Wall Tile
BATHROOM FLOOR AND WALL TILE	Ferroker Niquel Floor and Shine Niquel Wall Tile
EN-SUITE FLOOR AND WALL TILE	Ferroker Niquel Floor and Shine Niquel Wall Tile
WARDROBE	White Frame and Panel
PLUMBING UPGRADE	Shower Over Bath, Small Towel Warmer to En-Suite and Large Towel Warmer to Bathroom
ELECTRICAL UPGRADE	23x Polished Chrome Downlights







We're ready, are you?

Reserve now

