

A BOOK ABOUT

Anthem



Welcome

Welcome to Strata, we design and build beautiful contemporary homes.

We believe that 'home' is just about the most universal and important thing there is. Home is so much more than a shelter from the elements it is a place where you can relax, dream and be yourself. Every home should have a story and we are incredibly proud to be a part of that story for our customers.

We love Scandinavian design and this influence flows through our homes. Large windows, high ceilings and clean lines in the finer details create a feeling of space and light.



1

B E L O N G

2

C R E A T E

3

L I V E

4

LOVE

5

PERSONALISATION

6

SHARE







loved and
lived in
with friends
and family

1

B E L O N G

Our customers don't just want to buy a new home from us, they want to belong.

We consider customers an extension of our family. While we're building homes, we're also building relationships, and that's what inspires us to keep finding new ways to go beyond in everything we do.

We want every customer to get the most from their home, which is why we love to see how they inspire and interact with one another. With regular events, our communities are growing all the time. On social media, #MyStrataStory is used to share moving tips and interior design preferences. The desire to belong to something is always growing.

When people make a commitment as big as buying a home, it's important that their commitment is reciprocated. That's why we stay in touch with our customers, offering support and sharing expertise at every step, long after we've handed over the keys.

What we want is a lasting connection, and to be there for them whenever they need us.

A UNIQUE LOCAT





E

ION







LONDON
3 hours 15 minutes


SHEFFIELD
1 hour 28 minutes

BY TRA

WAKEFIELD
1 hour 23 minutes

LEEDS
1 hour 2 minutes

YORK
1 hour 51 minutes



I N

Connect

Anthem is a collection of two, three and four bedroom homes, located in Beverley, just a 20 minute drive away from Hull. It's well connected, with the M62 just a short drive from home, with a direct link from the A164.

Anthem is in a great location for commuting into the city of Hull and further afield. Travel by train is easy, with Beverley station just five minutes away from home offering services to over 37 locations including Harrogate, Leeds, Liverpool, Manchester and Sheffield. Harrogate is just over two hours away via train, while Leeds, Sheffield and Manchester are between one and two hours away. Liverpool is also a popular destination, with a slightly longer journey of four hours. Closer to home is Beverley bus station, with regular services taking you to places such as Hull City Centre and Bridlington.

Timing taken from AA route planner from Anthem and are approximate when travelling by car.

LINCOLN

76

MINUTES

HULL

14

MINUTES

GRIMSBY

42

MINUTES

LEEDS

68

MINUTES

YORK

54

MINUTES

BY CAR



INDE- PEN- DENTS

Eat
Drink
Shop
Relax



There is something for everyone in Beverley.

Beverley Parks nature reserve is right on your doorstep, just a 15-minute walk from home. You'll also find Beverley Westwood, a lovely country park perfect for long walks with the family, just an eight-minute drive from Anthem.

The historic market town is remaining true to tradition, with a weekly market in the centre of town every Saturday. You'll find a vibrant mix of over 120 independent stalls selling food around the world, fruit and veg, freshly baked goods, arts, crafts and clothes.

There's lots to do in Beverley for families with young children. Just three minutes away from home is Inflation Nation, an inflatable theme park based in the Flemingate Shopping Centre.

Let Loose! Yorkshire is six minutes away in the car, which is the perfect activity village for kids of all ages. There's a climbing wall, low and high ropes courses, zip wires, a climbing wall and even a roller-skating arena.

There are plenty of places to shop in Beverley, with Flemingate shopping centre being the most popular, just a short drive away. Flemingate brings fashion, food and film close to East Yorkshire with a host of big name stores including Debenhams, River Island, H&M, Outfit and more. You can relax and unwind at Wellington Pizza Pub, Patisserie Valerie, Costa and Starbucks before catching the latest films at Parkway cinema. You can also find plenty of fashion, home interiors, beauty and gift shops dotted around North Bar. The grab a bite to eat with Pizza Express, Tapas and French cuisine along with Whites, a Michelin Star restaurant, all in this part of Beverley. There are also a great selection of independent cafes and pubs with lots of history and character.



VINE & GRAIN

ODHJL







A tall, narrow wooden shelving unit with four shelves, displaying various wooden and ceramic objects. The top shelf features a wooden stool, several cylindrical ceramic vessels, a wooden comb-like object, and four stacked boxes labeled 'FALCON'. The second shelf holds a dark bowl, a shallow wooden dish, two wooden bowls, a yellow object, and small jars. The third shelf displays a wooden tray, a small teapot, two small dark jars, a wooden block, and more small jars. The bottom shelf contains a wooden stool, a wooden cutting board, a wooden comb-like object, a stack of white bowls, and three stacked boxes labeled 'FALCON'.







Learn

Schools in the area are very highly rated, with Beverley Saint Nicholas Primary School, Keldmarsh Primary School and Beverley Minster Primary School all within a four minute car journey or a 20 minute tram journey from home. Beverley High School is also rated good by Ofsted and is an eight minute car journey from home or alternatively it is only 23 minutes on the tram.



2

C R E A T E

We love design. For us, this goes much further than building homes. We see it as an attitude to life.

Being passionate about design means looking intensely at the world around you, examining how things work and then striving to make them better.

It's not enough to look at how physical objects function. It's even more important to consider how they make people feel.

Hopefully you can sense that level of care in everything we do.

ABOUT ANTHEM

Nestled in the established community of Beverley, Anthem is a collection of two, three and four bedroom homes.

Whether you're looking for your first home to call your own, or want more space for your family to live and grow, you'll fit right into the community at Anthem.

- 
- The site plan shows a collection of houses arranged in a grid-like fashion with winding streets. The houses are color-coded according to the legend. A central green area contains a playground and a large rectangular structure, possibly a pool or community center. The plan also shows parking areas, landscaping with trees and shrubs, and an 'Existing Property' area at the top right.
-  **Livorno** Two bedroom home
 -  **Geneva** Three bedroom home
 -  **Oporto** Four bedroom home
 -  **Bologna** Four bedroom home
 -  **Seville** Four bedroom home
 -  **Vienna** Four bedroom home
 -  **Affordable housing**



*Site layout is for illustrative purposes and may be subject to change. Please ask your Experience Manager to view the working drawings for updated detail.



3

L I V E

Home is just about the most important thing in life. Home is not just about bricks and mortar; it's about feeling 'at home' in a space that you can call your own. It's about having the freedom to live and grow.

From considered two bedroom designs to spacious four bedroom homes, the collection at Anthem has a place for you to call home.



THE Vienna

Inspired by a classic townhouse, the Vienna is designed over three floors with a spacious living area and four double bedrooms.

The central hallway leads to a spacious kitchen dining area with large window, letting in plenty of natural light.

At the rear of the home, the bright and airy lounge benefits from French doors which open out to the private garden.

On the first floor of the home you will find two double bedrooms, and a family bathroom. Perfect for hosting overnight guests or giving older children their own space to live and grow.

On the second floor, you'll find a further double bedroom and the master bedroom with en-suite.

The Vienna also comes with its own driveway and a separate garage.

Vienna





GROUND FLOOR

- 1 **Kitchen/dining** (max)
2708mm x 6487mm 8'11" x 21'2"
- 2 **Lounge** (max)
4895mm x 3963mm 16'0" x 13'0"
- 3 **Cloakroom** (max)
887mm x 1810mm 2'10" x 5'9"

FIRST FLOOR

- 4 **Bedroom** (max)
4605mm x 3898mm 15'1" x 12'7"
- 5 **Bedroom** (max)
4895mm x 2791mm 16'0" x 9'1"
- 6 **Bathroom** (max)
2400mm x 1925mm 7'8" x 6'3"

SECOND FLOOR

- 7 **Master bedroom** (max)
3630mm x 4740mm 11'9" x 15'5"
- 8 **Ensuite** (max)
1500mm x 2300mm 4'9" x 7'5"
- 9 **Bedroom** (max)
4895mm x 2968mm 16'0" x 9'7"



GROUND FLOOR



FIRST FLOOR



SECOND FLOOR



THE Seville

The Seville is a classic townhouse with four spacious bedrooms and large first floor lounge.

The entrance hall with adjoining cloakroom leads to the Seville's spacious farmhouse-style kitchen. Double French doors open out to the private garden, flooding the kitchen with natural light.

The first floor lounge is a bright and airy space thanks to two large Georgian windows. There is also the master bedroom that looks over the garden and has its own ensuite on this floor.

The guest bedroom on the second floor also has an ensuite, perfect for hosting overnight guests. There are also a further double and a single bedroom and a family bathroom on this floor.

The Seville also has an integral garage.

Seville





GROUND FLOOR

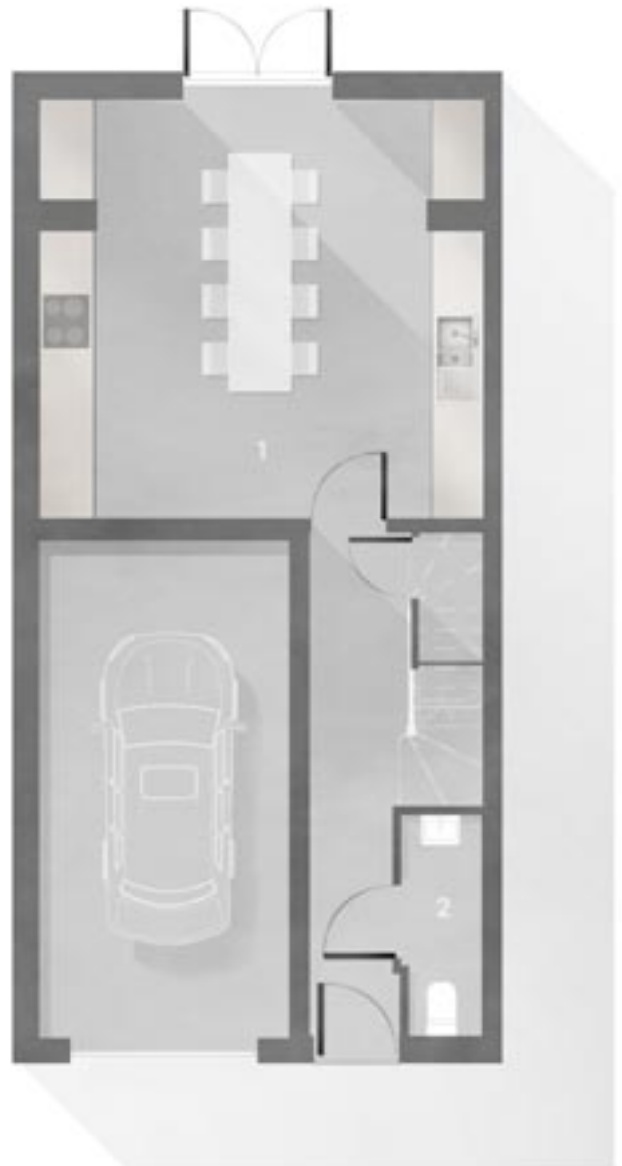
- 1 **Kitchen/dining** (max)
5289mm x 5000mm 17'3" x 16'4"
- 2 **Cloakroom** (max)
990mm x 2400mm 3'2" x 7'8"

FIRST FLOOR

- 3 **Lounge** (max)
5000mm x 4243mm 16'4" x 13'9"
- 4 **Master bedroom**
5289mm x 3485mm 17'3" x 11'4"
- 5 **Ensuite** (max)
2265mm x 1485mm 7'4" x 4'8"

SECOND FLOOR

- 6 **Bedroom** (max)
3403mm x 3578mm 11'1" x 11'7"
- 7 **Ensuite** (max)
2024mm x 2300mm 6'6" x 7'4"
- 8 **Bedroom** (max)
3091mm x 3484mm 10'1" x 11'4"
- 9 **Bedroom**
2100mm x 3484mm 6'8" x 11'4"
- 10 **Bathroom** (max)
1700mm x 2370mm 5'7" x 7'7"



GROUND FLOOR



FIRST FLOOR



SECOND FLOOR



THE Oporto

The Oporto is a four bedroom home is designed over three floors, with loft-style master bedroom.

Leading off the central hallway is a cloakroom and spacious lounge with large window at the front of the home. At the rear of the home, you'll find the open plan kitchen and dining area with French doors leading to a private garden.

On the first floor, there are two double bedrooms and one single bedroom as well as family bathroom.

The loft-style master bedroom spans the second floor and is an impressive space with two skylights that flood the room with natural light. There is also a good-sized ensuite. The Oporto has a private driveway and a separate garage.

Oporto





GROUND FLOOR

- 1 **Kitchen/dining** (max)
5645mm x 3105mm 18'6" x 10'2"
- 2 **Lounge** (max)
3335mm x 5095mm 10'11" x 16'9"
- 3 **Cloakroom** (max)
1000mm x 1675mm 3'3" x 5'5"

FIRST FLOOR

- 4 **Bedroom** (max)
2960mm x 4327mm 9'8" x 14'2"
- 5 **Bedroom** (min)
2797mm x 3930mm 9'2" x 12'11"
- 6 **Bedroom** (max)
2755mm x 2852mm 9'0" x 9'4"
- 7 **Bathroom** (min)
2380mm x 1900mm 7'10" x 6'3"



GROUND FLOOR

SECOND FLOOR

- 8 **Master bedroom** (max)
4568mm x 3890mm 14'9" x 12'7"
- 9 **Ensuite** (max)
2295mm x 1475mm 7'6" x 4'9"
- 10 **Seating** (max)
3257mm x 2868mm 10'8" x 9'5"



FIRST FLOOR



SECOND FLOOR



THE Bologna

The Bologna is an impressive four bedroom home with an open-plan kitchen and dining area, making it a great place to spend time with family and friends.

The spacious lounge features two large windows which flood the room with natural light. The open kitchen and dining space on the other side of the home features French doors which open out from the dining area to the garden.

On the first floor there are four bedrooms and a family bathroom. The master bedroom has fitted wardrobes and its own ensuite.

The Bologna also has its own separate garage.

Bologna







GROUND FLOOR

- | | | |
|----------|---|---------------|
| 1 | Kitchen/dining <small>(max)</small>
3327mm x 6203mm | 10'5" x 20'4" |
| 2 | Lounge
3173mm x 6203mm | 10'5" x 20'4" |
| 3 | Utility
1250mm x 1863mm | 4'1" x 6'1" |
| 4 | Cloakroom <small>(min)</small>
1000mm x 1600mm | 3'3" x 5'3" |



FIRST FLOOR

5	Master bedroom 3384mm x 3374mm	11'1" x 11'1"
6	Ensuite (min) 2338mm x 1500mm	7'8" x 4'10"
7	Bedroom 3230mm x 3372mm	10'7" x 11'1"
8	Bedroom (max) 2809mm x 2743mm	9'3" x 9'0"
9	Bedroom (max) 2813mm x 2740mm	9'3" x 9'0"
10	Bathroom (min) 2247mm x 1700mm	7'4" x 5'7"



THE Geneva

The Geneva is a three bedroom home designed over three floors, with an open-plan living space and luxurious master bedroom.

The Geneva's ground floor lounge, dining and kitchen area has a bright and airy feel, with large French doors leading onto the back garden. There is a downstairs cloakroom and understairs storage.

The first floor provides two generously-sized double bedrooms and a family bathroom. There is an airing cupboard for extra storage.

The master suite has an open stairwell, large dormer window and high sloping ceiling. The ensuite incorporates a skylight and corner shower.

The Geneva has its own allocated parking space or driveway.

Geneva





GROUND FLOOR

- 1 **Kitchen/dining** (max)
2738mm x 4873mm 9'0" x 16'0"
- 2 **Lounge** (max)
4965mm x 3255mm 16'3" x 10'8"
- 3 **Cloakroom** (max)
937mm x 1560mm 3'1" x 5'11"

FIRST FLOOR

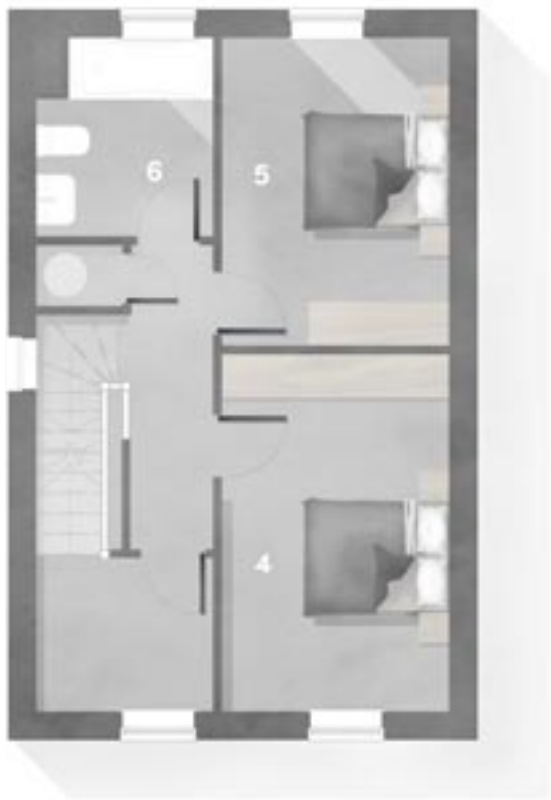
- 4 **Bedroom**
2750mm x 4311mm 9'0" x 14'2"
- 5 **Bedroom**
2738mm x 3716mm 9'0" x 12'2"
- 6 **Bathroom** (min)
1688mm x 2400mm 5'6" x 7'10"

SECOND FLOOR

- 7 **Master bedroom** (max)
3811mm x 6465mm 12'6" x 21'3"
- 8 **Ensuite** (min)
2300mm x 1487mm 7'7" x 4'11"



GROUND FLOOR



FIRST FLOOR



SECOND FLOOR



THE Livorno

The Livorno is a unique home designed over three floors with an impressive master bedroom, second bedroom and open-plan lounge.

On the ground floor of the Livorno there is a show room, as well as a double bedroom that could be used as a study or separate living area.

The staircase leads up to the open plan first floor living space, with modern kitchen and space for a corner sofa.

Occupying the whole of the second floor is the master bedroom with ensuite. Large windows enhance the room's light and open atmosphere.

The Livorno comes with an allocated parking space and outdoor space, wherever possible.

Livorno





GROUND FLOOR

- 1 **Bedroom 2** (max)
4860mm x 2719mm 15'4" x 8'11"
- 2 **Shower room** (max)
1447mm x 2327mm 4'9" x 7'8"

FIRST FLOOR

- 3 **Lounge/kitchen/dining** (max)
4680mm x 3470mm 15'4" x 11'5"

SECOND FLOOR

- 4 **Master bedroom** (max)
4680mm x 3513mm 15'4" x 11'6"
- 5 **Ensuite** (max)
1710mm x 2118mm 5'7" x 6'11"



GROUND FLOOR



FIRST FLOOR



SECOND FLOOR



4

L O V E

We are a modern family business with a fresh approach to home building. Our love of design and quality underpins a desire to create beautiful homes of the highest standards. We hand-select our suppliers to offer the best possible ranges and exceptionally high quality specification in every home we build.













Kitchens

Your contemporary kitchen is hand-crafted by a leading Kitchen supplier. The modern designs come in a range of colour and texture options to suit everyone's tastes.



























Bathrooms & ensuites

Your modern bathroom and en-suite feature the finest sanitaryware, and can be personalised with a range of tiles by world-leading manufacturer Porcelenosa to help you to create a luxurious spa-inspired finish in your home.













Outside

Our home designs are considered inside and out, right down to the finest detail. Each of our home designs has a statement front door with contemporary handle and door number. Many have overhead canopies with wall-mounted door lights or ceiling mounted lights in the porch and UPVC windows.

The front gardens are landscaped with a tarmac or block paved driveway. Rear gardens are enclosed for privacy and fencing is finished in a stylish dark brown wood stain.







5

PERSONALISATION

When buying a home, the interior design experience of the show homes is just the beginning. Once you have chosen the home design you love, you will get the opportunity to really make the space your own with a range of bespoke personalisation options.

Your new home is a blank canvas for you to express your style and personality. From a choice of high-quality kitchens, wardrobes and tiles, to the finer details such as lighting; you can personalise every room in your new home.

Home design

	The Livorno Two bedroom home	The Geneva Three bedroom home	The Bologna Four bedroom home
10 year structural warranty	•	•	•
Gas central heating with boiler	•	•	•
Landscaped front garden	•	•	•
Turf to rear garden			
Outside tap			•
UPVC windows	•	•	•
Front door with multi point lock	•	•	•
Smoke detectors on each floor	•	•	•
Two television & one telephone point	•	•	•
Ensuite bathroom to master bedroom	•	•	•
Contemporary design sanitaryware	•	•	•
Shower over bath with screen			
Choice of fitted wardrobes to master bedroom			•
White horizontal 4 line internal doors	•	•	•
Choice of kitchen unit doors & worktops	•	•	•
Stainless kitchen sink and mixer tap	•	•	•
Single electric oven & extractor with induction hob			•
Single electric oven & extractor with ceramic hob	•	•	
Choice of wall tiles by Porcelanosa	•	•	•
Integrated washing machine, dishwasher & fridge/freezer			•
White emulsion paint finish to walls & ceilings	•	•	•
White gloss paint finish to woodwork	•	•	•

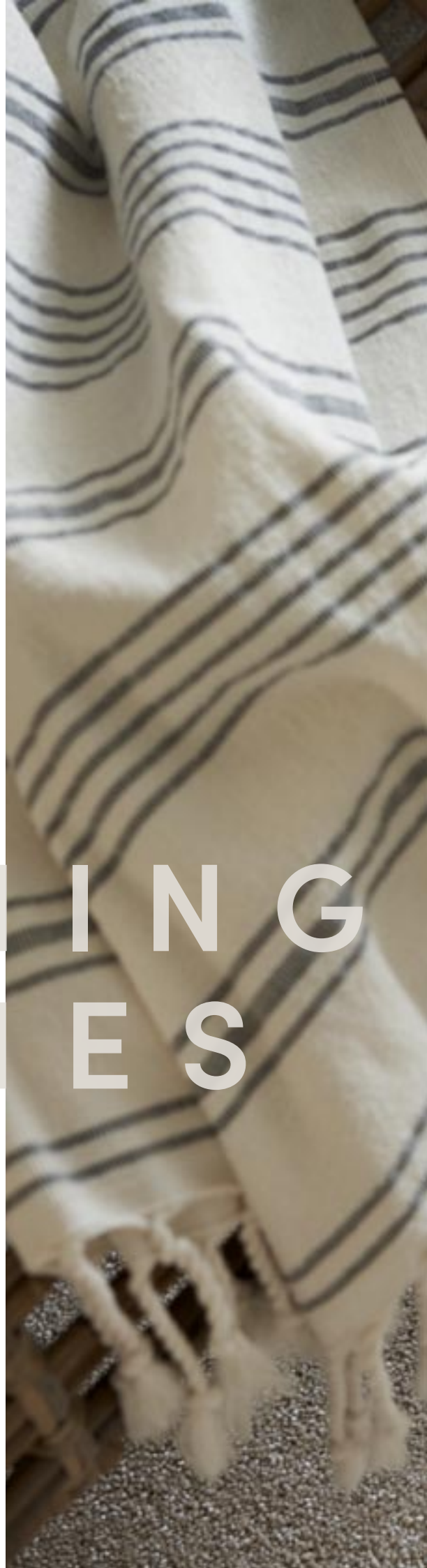


FINISHING TOUCHES

When you reserve a new Strata home, you'll select personalisation options to make it yours, from your stylish new kitchen right down to the finishing touches.

Visit our show homes for the latest interior design trends and search #MyStrataStory on Instagram for more inspiration from Strata homeowners.

DISCOVER MORE







6

S H A R E

But don't just take our word for it. Our customers are amazing. We feel privileged that they want to share their experience with us on social media and Trustpilot.

All our homes are built equally, but no two are ever lived in the same. See for yourself how individual stories play out in every home we build.

Find our customers on Instagram through #MyStrataStory and see their honest feedback or yourself through Trustpilot. Or come and talk to them. You are always welcome at Anthem.

@ourstrataporto77



@Thehousehold



@Vienna_at_kudos



@mystratahomemadrid

Join the community of homeowners sharing their Strata Stories on Instagram.
Search #MyStrataStory

@thehouseofjandj



@turnberrytownhouse



@withsammypatterson



@newbuildtownhouse



homesbystrata



homesbystrata



homesbystrata



homesbystrata



Minster Way, Beverley HU17 0SY

Please pass on to a friend or recycle